

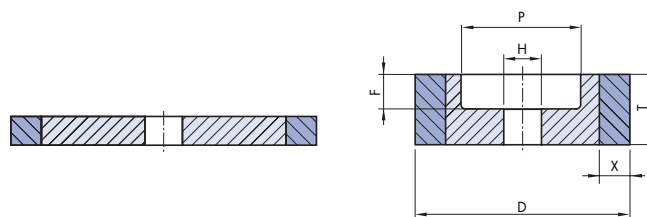
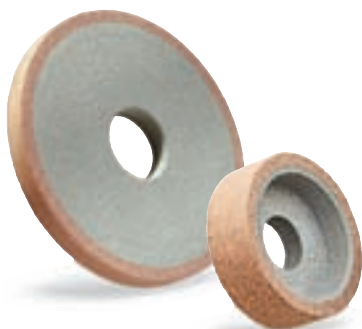


## Notranje okroglo brušenje s superabrazivi

### Brus 1A1

D x T x X x H

brus za notranje brušenje\*



Primer za izpis naročila:

1A1 100x15x3x20

02B126P4VC100

D	T	H	X	P	F
25	6-20		3		
32	6-20		3		
40	6-20	po	3.5	po	
100	6-20	dogovoru	3.5	dogovoru	

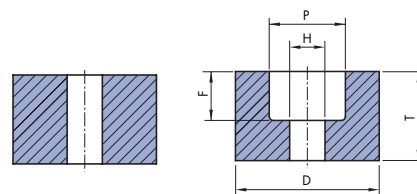
F = max. T/2

\*Nosilno telo iz abrazivne keramike, aluminija ali jekla

### Brus 1A8

D x T x H - P x F

brus za notranje brušenje\*



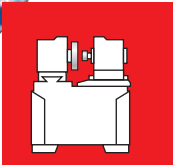
D	T	H	P	F
6	4-15	3		
8	2-15	3 (4)		
10	4-16	3 (4)	po	
13	4-16	4 (6)	dogovoru	
16	4-16	4 (6,8)		
18	4-16	4 (6)		
20	4-20	6 (8,10)		

F = max. T/2

Primer za izpis naročila:

1A8 16x16x4 - 6x8

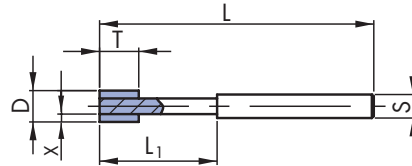
01D107P4VC125



## Brus 1A8W

D x T x X x S x L

Brusni čep

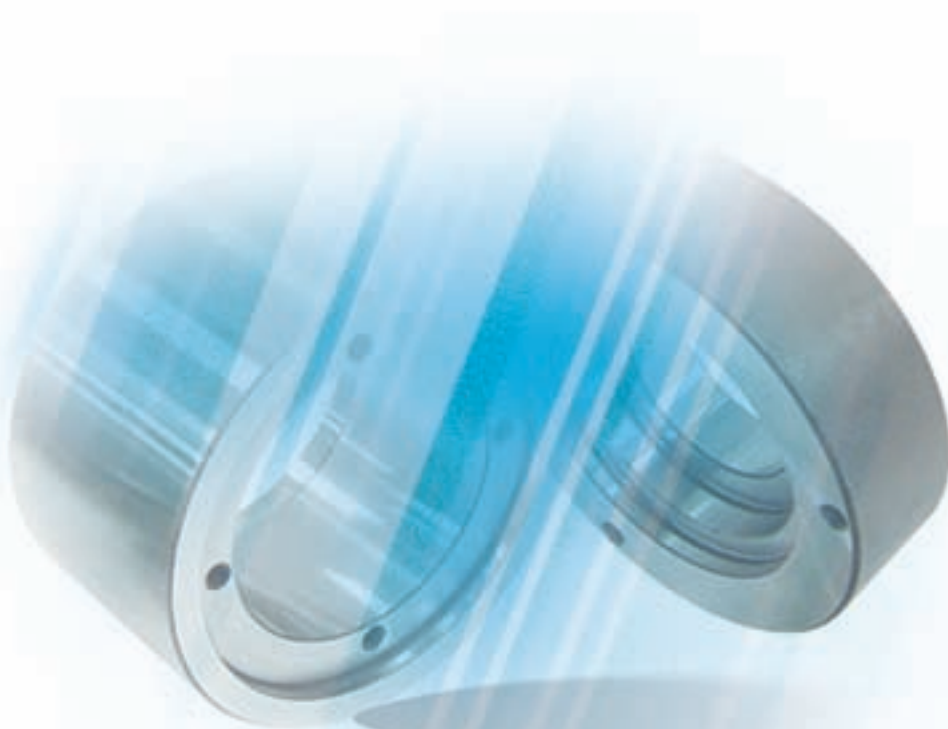


Primer za izpis naročila:

1A8 16x10x4x8x70

01D107P4VC125

D	T	X	S	L	L1
6	6	3	6	70	20
8	8-10	3(4)	6	70	20
10	8-10	3(4)	6	70	
13	8-10	4(6)	6	70	
16	8-15	4(6)	(6) 8	70	
18	8-15	4(6)	(6) 8	70	
20	8-15	6(8)	(6) 8	70	





## Notranje okroglo brušenje

### Brus NB F1

$D \times T \times H$

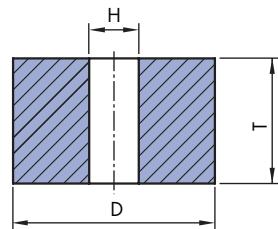
ravni brusi za notranje brušenje



Primer za izpis naročila:

NB F1 20x20x8

3LA8018VL



D	T	H
6	6, 10, 13	2, 5, 3
8	8, 10, 16	2, 5, 3
10	6, 10, 13, 20	3, 4
13	6, 13, 20	3, 6
16	6, 10, 16	6
20	13, 20, 25, 32	6, 8
25	13, 20, 25, 32, 40	6, 8, 10
32	13, 20, 25, 32, 40	6, 8, 10, 13
40	13, 20, 25, 32, 40	6, 10, 13, 16
50	13, 20, 25, 32, 40	10, 13, 16, 20
63	13, 20, 25, 32, 40	13, 16, 20
80	13, 20, 25, 32, 40	16, 20, 25
100	16, 25, 32, 40, 50	16, 20, 25

### Brus NB F5

$D \times T \times H - P \times F$

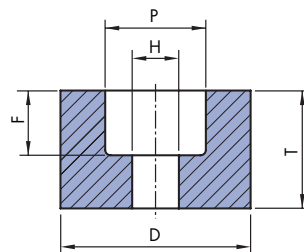
brusi za notranje brušenje -  
poglobitev z ene strani



Primer za izpis naročila:

NB F5 40x25x10-25x12

3SA60J7VL

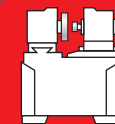


D	T	H	P	F,G
16	10, 16	6	10	
20	13, 20	6, 8	13	
25	10, 16, 25	6, 8, 10	16	
32	16, 20, 25, 32	8, 10, 13	20	
40	20, 25, 32, 40	10, 13	25	
50	20, 25, 32, 40	16, 20	32	
63	25, 32, 40, 50	16, 20	32	
80	40, 50, 63	20, 25	40	
100	32, 40, 50	20, 25, 32	52	

F+G = max. T/2

# Kvaliteta brusov za notranje okroglo brušenje

# 07



Obdelovani material		Kvaliteta
<b>Jekla</b> 	Univerzalno Nekaljeno Kaljena do 62 HRc Kaljeno nad 62 HRc Hitrorezna (HSS) Nerjavna Za ležaje	3LA80I8VL 22A60K7VL 40A60I8VL 03B91P4VC125, 3LA80I8VL, 3SA60J7VL 03B91P4VC125, 62A60I8VL, 10C80H7VL 22A60I8VL 82A80K6V80L, 82A120K6V80L, 5LA150/5L6V63WL, 5LA180/5L6V63WL
<b>Trdine</b> 	Karbidna trdina	01D91P4VC100, 10C80H7VL
<b>Barvne kovine</b> 	Al in zlitine Cu in zlitine	90C60H7VWL, 90C80H7VWL 90C60H7VWL, 90C80H7VWL
<b>Nekovine</b> 	Plastične mase	90C60H8VWL

