



## Zunanje okroglo brušenje brez konic CENTERLESS

### Brusna plošča F1

$D \times T \times H$

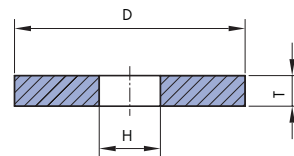
ravna brusna plošča



Primer za izpis naročila:

F1 300x50x127

11A54M5VL



D	T	H
250	do 150	51, 76, 100, 120
300	do 150	76, 127
350	do 150	76, 127, 151
400	do 150	127, 151, 203
450	do 150	127, 151, 203
500	do 150	203, 305
600	do 150	203, 305

### Brusna plošča F5

$D \times T \times H - P \times F$

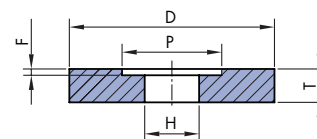
ravna, poglobitev - ena stran



Primer za izpis naročila:

F5 300x50x127-200x20

40A46K6VL



D	T	H	P	F
250	do 150	51, 76	130	
300	do 150	76, 127	190	
350	do 150	76, 127	215	
400	do 150	127, 151, 203	230	
450	do 150	127, 151, 203	290	
500	do 150	203, 305	290	
600	do 150	203, 305	290	

F = max. T/2

### Brusna plošča F7

$D \times T \times H - P \times F / G$

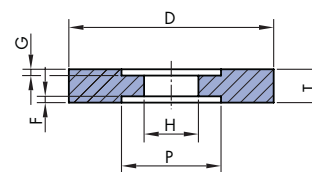
ravna, poglobitev - obe strani



Primer za izpis naročila:

F7 300x50x127-100x15/10

22A46L6VL



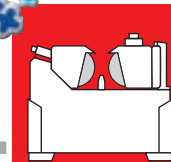
D	T	H	P	F, G
250	do 150	51, 76	130	
300	do 150	76, 127	190	
350	do 150	76, 127, 151	215	
400	do 150	127, 151, 203	230	
450	do 150	127, 151, 203	290	
500	do 150	203, 305	290	




F+G = max. T/2

# Kvaliteta brusnih plošč za zunanje okroglo brušenje brez konic



# 04



Obdelovani material		Kvaliteta
<b>Jekla</b> 	Nekaljena Kaljena do 62 HRc Kaljena nad 62 HRc Hitrorezna (HSS) Nerjavna	15A60M6B, 11A54M5VL, 11A100L7VL 47A60N6B, 22A46L6VL, 47A60N6B, 40A46K6VL, 22A100L7VL 47A60N6B, 82A46K6VL, 82A100K7VL 22A46K8VL, 22A100K8VL
<b>Litine</b> 	Siva Nodularna Jeklena	417A46M6B, 12A46M6VL, 12C100K7VL 417A46M6B, 41A46L6VL, 41A120K7VL 22A46L6VL
<b>Nekovine</b> 	Plastične mase Feriti	90C60K7B, 90C46K7VL, 90C100J8VL 90C60K7VL, 90C100J8VL
<b>Pogonske plošče</b>		A80T35B, 15A100R5B